



# 500 ECO

TREATMENT CHAIR



ENJOY QUALITY AND DESIGN

E

# 500 ECO



Art. Nr.: 1500 0008

Perfect for I.V.I. treatments. Direct power connection and the integrated power supply unit enable the more powerful operation with high adjustment speed.

**Out of the box**  
solution

DIRECT POWER CONNECTION



## Positioning

Efficient, comfortable and fast!



Entering



Patient positioning



**5-6 SEC**  
IN OR-POSITION

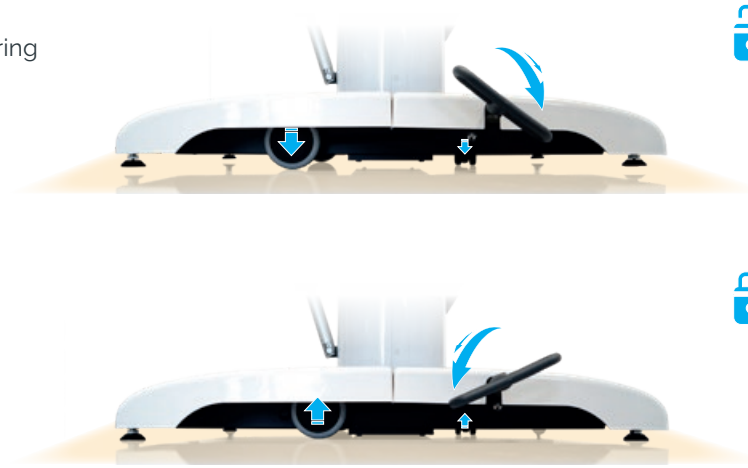
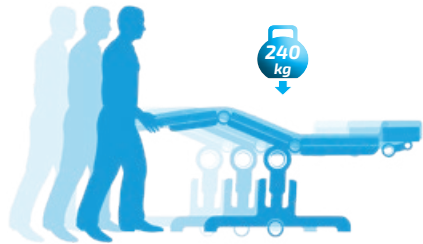


Surgery position

## Sturdy base with mono lifting column

### Stability / Maneuvering aid

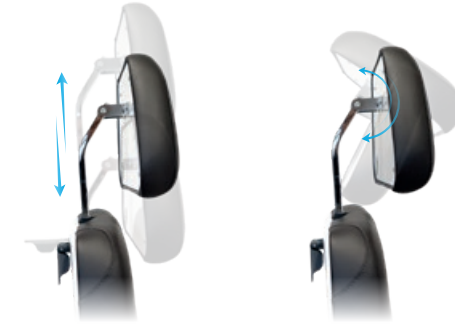
Sturdy stand with three extendable castors combines high stability with simple maneuvering aid (in the event of a change of a location).



## Precise positioning of the head part

### Headrest

Mechanical adjustment options for comfortable and fine-tuned positioning of the patient's head, adapted to his individual body dimensions.



## Positioning by hand control

### Multi-functional manual keypad



Reset button



CPR button



Auto run function



8 free configurable memory positions



## Positioning by foot control

### Optional: foot switch

For 2 memory positions (M1/M2) Item No.: 3351 1029



# Technical specifications



## Chassis

- Outside length 910 mm
- Outside width incl. foot pedal 600 mm
- Outside width incl. arm rests 845 mm
- White paint finish
- 2 pcs. double castors  $\varnothing$  100 mm
- 2 pcs. rigid castors  $\varnothing$  35 mm
- Optional: foot keypad (2 Memory-Positionen, M1/M2)

## Upper frame

- 4-part support frame (head, back, seat, leg part)
- Length 1,950 – 2,230 mm
- Width of upholstery 600 mm
- Entry height 550 mm
- Removeable upholstery

	Angle	Dimensions (L x W)
• Head part	-27° / +180°	280 x 420 mm
• Back part	-23° / +85°	710 x 600 mm
• Seat part	-3° / +28°	510 x 600 mm
• Leg part	0° / -75°	490 x 530 mm
• Height adjustment		615 – 890 mm
• Armrests	0° / +180°	455 x 75 mm
• Legroom surgeon		485 – 760 mm
• CPR / flatposition		(height back part) 600 mm

## Electrical control

- All components according to IP54
- Hand control with 8 individually programmable memory positions, auto run function, reset button
- Foot keypad (optional)

### Electric Drives

- Back, seat, leg part, total up/down

## Lifting column

- Max. lifting 275 mm
- Max. patient weight 240 kg
- Motors IPX4 with HAL sensors, to be memorized

## Seat part / CPR

## Back part / Leg part

## Height adjustment / Legroom



## Application example

*assistTrend*  
+ armrest pair

Item No.: 2500 0002  
+ Item No.: 3300 0000

500 *ECO*

Item No.: 1500 0008



## Further technical details

- Chair has detachable, swiveling armrests made completely with PUR foam
- Detachable seat for service friendly access to electric components

Max. load 240 kg

Weight 90 kg

Subject to technical modifications.

## Equipment protection

### Paper rolls *stayClean roll*

White embossed, 2-ply, 50 cm x 50 m  
Carton à 9 pieces **Item No.: 3034 0021**

Page 75



## Upholstery / colour card

**Standard colour** anthracite **Item No.: 3037 0052**  
+ chrom **Item No.: 3037 0056**

„Pandoria Plus“  
Page 109

„Tundra skai“  
Page 108



# Components



FUNCTIONAL  
CLASS



**500 ECO**  
Item No.: 1500 0008



Multifunctional headrest

Item No.: 3351 1034



Foot keypad to activate the two free configurable memory positions 1 and 2 of hand control

Item No.: 3351 1029



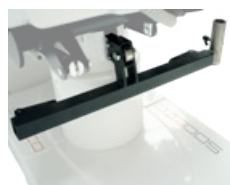
Paper roll holder

Item No.: 3351 1031



*stayClean roll*  
Paper rolls, white embossed, 2-ply, 50 cm x 50 m, carton à 9 pieces

Item No.: 3034 0021



Component mounting support, powder coated with component holder stainless steel

Item No.: 3351 1033



Component holder, stainless steel

Item No.: 3351 0037



Hand control holder, PVC (component mounting support 3351 1033 not included)

Item No.: 3351 1023



Component arm stainless steel, swiveling, incl. extendible I.V. Pole Ø 25 mm (component mounting support 3351 1033 not included)

Item No.: 3024 0014



I.V. Pole stainless steel Ø 25/18 mm, one-hand height adjustable 1,070 – 1,660 mm, 4 hooks, max. 2 kg/hook, glass and holder (component mounting support 3351 1033 not included)

Item No.: 3068 0000



Hand control holder for attachment onto an I.V. Pole Ø 25/18 mm, PVC

Item No.: 3351 1022



Side rails right and left, swiveling incl. locking, upholstered

Item No.: 3351 1036



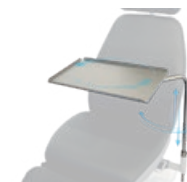
Anesthesia arm board with universal joint, with wrist secure straps

Item No.: 3078 0000



Norm rail 300 mm, seat part

Item No.: 3321 0000



Instrument table 500 x 300 x 15 mm, height adjustable, swiveling, detachable, incl. adapter (component mounting support 3351 1033 not included)

Item No.: 3065 0000



Foot protection foil

Item No.: 3326 0000



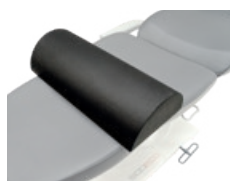
Trapeze cushion, wedge, for back/seat part

Item No.: 3022 0005



Knee roll round, 500 x 150 mm, PUD-coated

Item No.: 3050 0000



Knee half roll, 600 x 280 x 140 mm, PUD-coated

Item No.: 3019 0000



Body strap with Velcro straps, 2-piece

Item No.: 3083 0000



Inlay head pillow

Item No.: 3325 0000



Instrument table *supportLine* height adjustable 730 – 985 mm

Item No.: 3351 0026



Instrument table *supportLine plus* height adjustable 930 – 1,185 mm

Item No.: 3351 0045

# "Tundra skai"



High quality skai® material with fine calf leather grain and subdued matte-gloss-effect. The very extensive and trend-orientated colour spectrum enables many applications and combinations.

## Product Specification

- Long-lasting
- Tear resistant
- Easy to clean
- Abrasion resistant (DIN EN ISO 6570-2)
- Lightfast
- Disinfectant resistant
- Fulfills medical standard (DIN EN ISO 10993-5+10)
- Blood- and urine resistant
- Phthalate-free
- Vegan

<i>eyeForce</i>		1800 0000
<i>500 XLE</i>		1500 0006
<i>500 XLE comfort</i>		1500 0006
		+ 3037 0080
<i>500 bariatric</i>		1500 0002
<i>500 XLS</i>		1500 0005
<i>500 ECO</i>		1500 0008
<i>400 XL</i>		1400 0001
<i>surgiForce</i>	Formed seat	2600 0008
<i>surgiForce light</i>	Formed seat	2600 0009
<i>surgiLine</i>	Formed seat	2200 0008
<i>assistLine</i>		2400 0015
<i>motionLine</i>		1700 0000
<i>motionLine-E</i>		1700 0001

+ Item No.: 3037 0...



F6461198  
Item No.: .....134



F6461210  
Item No.: .....057



F6461636  
Item No.: .....094



F6461230  
Item No.: .....058



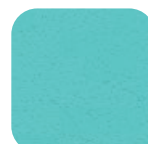
F6461610  
Item No.: .....153



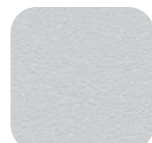
F6461495  
Item No.: .....067



F6461456  
Item No.: .....001



F6461338  
Item No.: .....008



F6461288  
Item No.: .....007



F6461550  
Item No.: .....070



F6461608  
Item No.: .....075



F6461496  
Item No.: .....068



F6461609  
Item No.: .....076



F6461581  
Item No.: .....073



F6461196  
Item No.: .....051



F6461453  
Item No.: .....062



F6461356  
Item No.: .....059



F6461381  
Item No.: .....119



F6461354  
Item No.: .....011



F6461350  
Item No.: .....010



F6461199  
Item No.: .....054



F6461454  
Item No.: .....063



F6461557  
Item No.: .....072



F6461556  
Item No.: .....071



F6461458  
Item No.: .....066



F6461457  
Item No.: .....065



F6461607  
Item No.: .....074



F6461542  
Item No.: .....069



F6461343  
Item No.: .....009



F6461543  
Item No.: .....109



F6461455  
Item No.: .....064



F6461273  
Item No.: .....006



F6461205  
Item No.: .....056



F6461204  
Item No.: .....055



F6461357  
Item No.: .....060



F6461195  
Item No.: .....050



F6461197  
Item No.: .....052



# "Pandoria Plus"



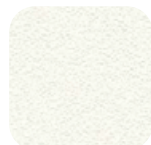
skai® Pandoria Plus is a high-quality upholstery material, whose fine micropore structure gives a certain unobtrusiveness, which is refined by an attractive tone-in-tone effect. The very pleasant feel of the material and the excellent material characteristic and the broad, modern color spectrum make skai® Pandoria Plus universally usable.

## Product Specification

- Long-lasting
- Tear resistant
- Easy to clean
- Abrasion resistant (DIN EN ISO 5470-2)
- Resistant to oil and fat
- Lightfast
- Disinfectant resistant
- Flame protection
- Fulfills medical standard
- Resistant to sudor, blood and urine
- 0161-21 (IMO FTPC Part 8)
- Antibacterial according to JIS Z 2801
- Vegan

<b>eyeForce</b>	1800 0000
<b>500 XLE</b>	1500 0006
<b>500 XLE comfort</b>	1500 0006
	+ 3037 0080
<b>500 bariatric</b>	1500 0002
<b>500 XLS</b>	1500 0005
<b>500 ECO</b>	1500 0008
<b>400 XL</b>	1400 0001

- + Item No.: 3037 0136
- + Item No.: 3037 0...



weiß F6413046  
Item No.: .....053



hellbeige F6413047  
Item No.: .....141



kiesel F6413048  
Item No.: .....158



birke F6413049  
Item No.: .....159



smoke F6413050  
Item No.: .....221



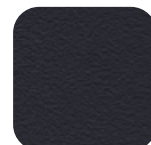
silbergrau F6413075  
Item No.: .....275



platin F6413053  
Item No.: .....161



anthrazit F6413076  
Item No.: .....276



schwarz F6413052  
Item No.: .....170



schoko F6413051  
Item No.: .....160



gletscher F6413055  
Item No.: .....162



sky F6413074  
Item No.: .....277



royal F6413056  
Item No.: .....163



smaragd F6413073  
Item No.: .....278



kaktus F6413077  
Item No.: .....281



feuer F6413058  
Item No.: .....166



kirsche F6413079  
Item No.: .....279



fuchsia F6413078  
Item No.: .....280



mais F6413057  
Item No.: .....164



limone F6413054  
Item No.: .....165

# Upgrade your OR to perfection.



*eyeForce*



*500 XLE*



*500 XLE comfort*



*500 bariatric*



*500 XLS*



*500 ECO*



*400 XL*



*motionLine*



*motionLine-E*



*surgiForce*



*surgiForce light*



*surgiTrend*



*surgiLine*



*stayClean wipes*



*stayClean*



*staySoft*



*stayClean roll*



*assistTrend*



*assistPro F*



*assistPro H*



*easyPro F*



*easyPro H*



*easyPro R*



*assistLine*



*supportLine*



*supportLine plus*

## CONTACT US



**UFSK**  
INTERNATIONAL

**OSYS**

UFSK-International OSYS GmbH  
Kirchhoffstraße 1  
93055 Regensburg  
Germany

Phone +49 (0)941 78862 15  
Fax +49 (0)941 78862 35  
Mail [info@ufsk-osys.com](mailto:info@ufsk-osys.com)  
Web [ufsk-osys.com](http://ufsk-osys.com)

**MADE IN GERMANY**  
Design | Construction | Manufacturing