



400 XL

TREATMENT TABLE



E

ENJOY QUALITY AND DESIGN

400 XL

Item No.: 1400 0001

Highly functional, basic hydraulic treatment table. The great freedom of movement and ample legroom for optimum access to the patients. The **400 XL** treatment table can be rotated by 360 degrees to also allow even lateral movements. Our entry-level model is based on a rugged and easy-to-use technology. In contrast to our electromechanical models, its function is independent of batteries. This keeps procurement costs low on the one hand and ensures a long service life on the other hand.



Can be used in any location

Easy to service and maintain

Outstanding resistance to tipping

Ergonomically shaped push handles

Designed for optimized function

Chassis

Gentle and stable hydraulic system for patient positioning. Foot pedal for hydraulic adjustment of head, back, shock position and overall up/down adjustment – guaranteed to last.



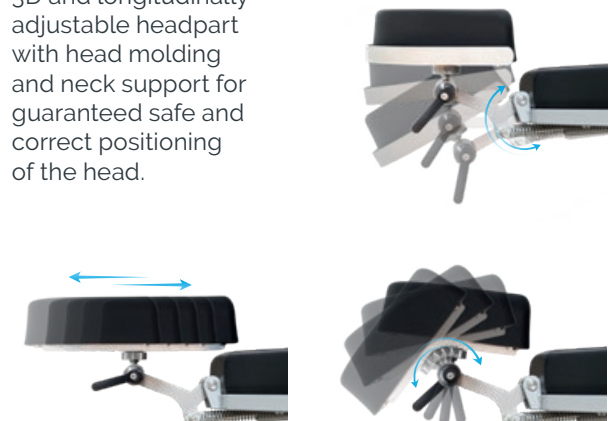
Double castors

Large double castors for easy moving and maneuvering by one person, even in confined spaces. Effortless directional stability - direction-setting castor, manually adjustable via foot pedal. Central foot brake acting on 4 castors.



Headrest

3D and longitudinally adjustable headpart with head molding and neck support for guaranteed safe and correct positioning of the head.



General

- Comfortable three-piece cover surface
- Wide and comfortable upholstery in anthracite
- Low entry height
- Suitable even for very tall patients



Technical specifications

Chassis

- Frame profile 50 x 50 mm
- Outside length 1,530 mm
- Outside width 750 mm
- Castor, electrically conductive ø 150 mm

Lifting column

- Foot hydraulic
- Height adjustment min. / max. 650 / 1,030 mm
- Max. lifting force 2,000 N
- Leg part lifting force 1,500 N
- Back part lifting force 1,200 N
- Head part lifting force 500 N
- Operating pressure 120 bar
- Hydraulic oil, DTE 10 EXCEL 32 approx. 0.7 liter

Upper frame

- 3-part support frame (head, back, leg part)
- Upholstery 80 mm
- Length 1,930 – 2,060 mm
- Width 700 mm
- Head part angle adjustment -28° / +21°
- Back part angle adjustment -13° / +58°
- Leg part angle adjustment 0° / +13°
- Trendelenburg -13°
- Height adjustment range 380 mm
- Standard stainless steel side rails, both sides 25 x 10 mm
- Entry height 650 mm
- Legroom surgeon 500 – 880 mm

Max. Load 175 kg

Weight 140 kg

Subject to technical modifications.

Technical dimensions

Trendelenburg



Back part



Height adjustment



Components



FUNCTIONAL
CLASS



400 XL
Item No.: 1400 0001

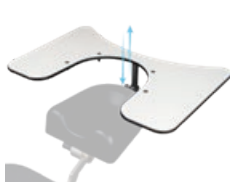
Colour card

Standard colour anthracite Item No.: 3037 0052

“Pandoria Plus”
Page 109

“Tundra skai”
Page 108





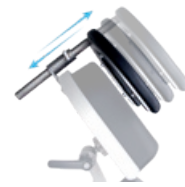
Wrist rest
550x370 mm,
height adjustable,
incl. mounting plate,
adjustment 115 mm

Item No.: 3209 0000



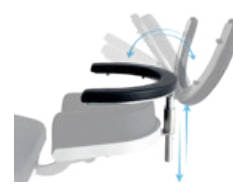
Head part bumper
stainless steel

Item No.: 3028 0000



Wrist rest, adjustable,
incl. mounting plate
3013 0000,
adjustment 115 mm

Item No.: 3014 0000



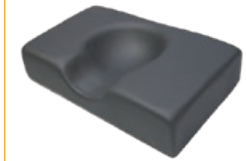
Wrist rest, adjustable, tiltable,
incl. mounting plate
3013 0000,
adjustment 115 mm

Item No.: 3014 0005



Mounting plate stainless steel,
for wrist rest 3014 0000,
3014 0005 and 3209 0000

Item No.: 3013 0000



Head fixation pillow with
hollow (rubins pillow),
410x250 mm, height 100 mm,
factory-fitted

Item No.: 3022 0000



Anesthesia arm board
with universal joint,
incl. mounting clamp

Item No.: 3011 0000



Side parts right and left,
580x200 mm,
incl. quick-release clamp for
mounting on norm rail

Item No.: 3351 0050



Knee half roll,
600x280x140 mm,
PUD-coated

Item No.: 3019 0000



Knee roll round,
500x150 mm,
PUD-coated

Item No.: 3050 0000



Wrist secure straps,
pair

Item No.: 3015 0000



Body strap with Velcro straps,
2-piece

Item No.: 3083 0000



Mounting clamp
stainless steel

Item No.: 3026 0000



Flexible surgical drape
support rod, with air
connection (mounting clamp
3090 0000 not included)

Item No.: 3033 0000



Flexible surgical drape
support rod (mounting clamp
3090 0000 not included)

Item No.: 3032 0000



Mounting clamp polished
aluminium, with quick clamp
lever for norm rail 25x10 mm,
incl. locking device

Item No.: 3090 0000



Instrument table
supportLine
height adjustable
730 – 985 mm

Item No.: 3351 0026



Instrument table
supportLine plus
height adjustable
930 – 1,185 mm

Item No.: 3351 0045

"Tundra skai"



High quality skai® material with fine calf leather grain and subdued matte-gloss-effect. The very extensive and trend-orientated colour spectrum enables many applications and combinations.

Product Specification

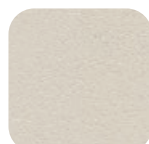
- Long-lasting
- Tear resistant
- Easy to clean
- Abrasion resistant (DIN EN ISO 6570-2)
- Lightfast
- Disinfectant resistant
- Fulfills medical standard (DIN EN ISO 10993-5+10)
- Blood- and urine resistant
- Phthalate-free
- Vegan

<i>eyeForce</i>		1800 0000
<i>500 XLE</i>		1500 0006
<i>500 XLE comfort</i>		1500 0006
		+ 3037 0080
<i>500 bariatric</i>		1500 0002
<i>500 XLS</i>		1500 0005
<i>500 ECO</i>		1500 0008
<i>400 XL</i>		1400 0001
<i>surgiForce</i>	Formed seat	2600 0008
<i>surgiForce light</i>	Formed seat	2600 0009
<i>surgiLine</i>	Formed seat	2200 0008
<i>assistLine</i>		2400 0015
<i>motionLine</i>		1700 0000
<i>motionLine-E</i>		1700 0001

+ Item No.: 3037 0...



F6461198
Item No.:134



F6461210
Item No.:057



F6461636
Item No.:094



F6461230
Item No.:058



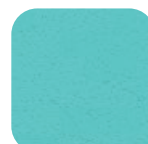
F6461610
Item No.:153



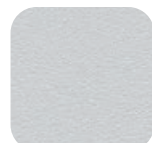
F6461495
Item No.:067



F6461456
Item No.:001



F6461338
Item No.:008



F6461288
Item No.:007



F6461550
Item No.:070



F6461608
Item No.:075



F6461496
Item No.:068



F6461609
Item No.:076



F6461581
Item No.:073



F6461196
Item No.:051



F6461453
Item No.:062



F6461356
Item No.:059



F6461381
Item No.:119



F6461354
Item No.:011



F6461350
Item No.:010



F6461199
Item No.:054



F6461454
Item No.:063



F6461557
Item No.:072



F6461556
Item No.:071



F6461458
Item No.:066



F6461457
Item No.:065



F6461607
Item No.:074



F6461542
Item No.:069



F6461343
Item No.:009



F6461543
Item No.:109



F6461455
Item No.:064



F6461273
Item No.:006



F6461205
Item No.:056



F6461204
Item No.:055



F6461357
Item No.:060



F6461195
Item No.:050



F6461197
Item No.:052

"Pandoria Plus"



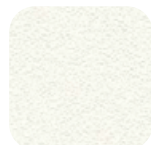
skai® Pandoria Plus is a high-quality upholstery material, whose fine micropore structure gives a certain unobtrusiveness, which is refined by an attractive tone-in-tone effect. The very pleasant feel of the material and the excellent material characteristic and the broad, modern color spectrum make skai® Pandoria Plus universally usable.

Product Specification

- Long-lasting
- Tear resistant
- Easy to clean
- Abrasion resistant (DIN EN ISO 5470-2)
- Resistant to oil and fat
- Lightfast
- Disinfectant resistant
- Flame protection
- Fulfills medical standard
- Resistant to sudor, blood and urine
- 0161-21 (IMO FTPC Part 8)
- Antibacterial according to JIS Z 2801
- Vegan

eyeForce	1800 0000
500 XLE	1500 0006
500 XLE comfort	1500 0006
	+ 3037 0080
500 bariatric	1500 0002
500 XLS	1500 0005
500 ECO	1500 0008
400 XL	1400 0001

- + Item No.: 3037 0136
- + Item No.: 3037 0...



weiß F6413046
Item No.:053



hellbeige F6413047
Item No.:141



kiesel F6413048
Item No.:158



birke F6413049
Item No.:159



smoke F6413050
Item No.:221



silbergrau F6413075
Item No.:275



platin F6413053
Item No.:161



anthrazit F6413076
Item No.:276



schwarz F6413052
Item No.:170



schoko F6413051
Item No.:160



gletscher F6413055
Item No.:162



sky F6413074
Item No.:277



royal F6413056
Item No.:163



smaragd F6413073
Item No.:278



kaktus F6413077
Item No.:281



feuer F6413058
Item No.:166



kirsche F6413079
Item No.:279



fuchsia F6413078
Item No.:280



mais F6413057
Item No.:164



limone F6413054
Item No.:165

Upgrade your OR to perfection.



eyeForce



500 XLE



500 XLE comfort



500 bariatric



500 XLS



500 ECO



400 XL



motionLine



motionLine-E



surgiForce



surgiForce light



surgiTrend



surgiLine



stayClean wipes



stayClean



staySoft



stayClean roll



assistTrend



assistPro F



assistPro H



easyPro F



easyPro H



easyPro R



assistLine



supportLine



supportLine plus

CONTACT US



UFSK
INTERNATIONAL

OSYS

UFSK-International OSYS GmbH
Kirchhoffstraße 1
93055 Regensburg
Germany

Phone +49 (0)941 78862 15
Fax +49 (0)941 78862 35
Mail info@ufsk-osys.com
Web ufsk-osys.com

MADE IN GERMANY
Design | Construction | Manufacturing