

*Silverstone*  
SS OCT



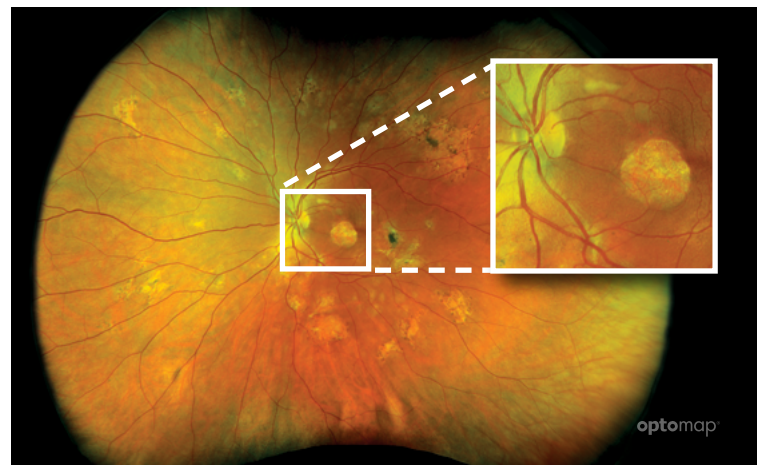
# OPTOS UWF™ RETINAL IMAGING WITH GUIDED, SWEEPED SOURCE OCT

## Silverstone SS OCT

**Silverstone is the most powerful tool yet for examining the retina.**

The only ultra-widefield retinal imaging device with integrated, UWF-guided swept source OCT, *Silverstone* produces a 200° single-capture **optomap**® image in less than ½ second and enables guided OCT scanning across the retina and into the far periphery.

**optomap** has been shown to enhance pathology detection and disease management, and to improve clinic flow.<sup>1</sup> Now with integrated swept source OCT, *Silverstone* facilitates examination of the retina from vitreous through the choroidal-scleral interface.

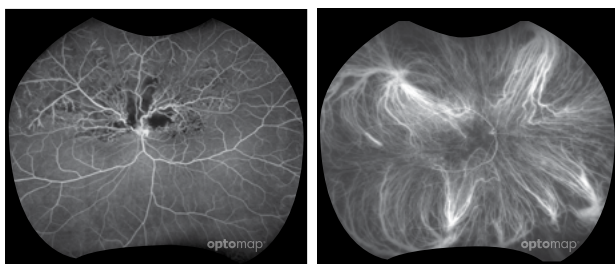


1-click UWF **optomap** imaging provides image resolution equivalent to ETDRS<sup>2</sup> and eliminates the need for multiple image sweeps or montaging.



**optomap color**

**optomap af**

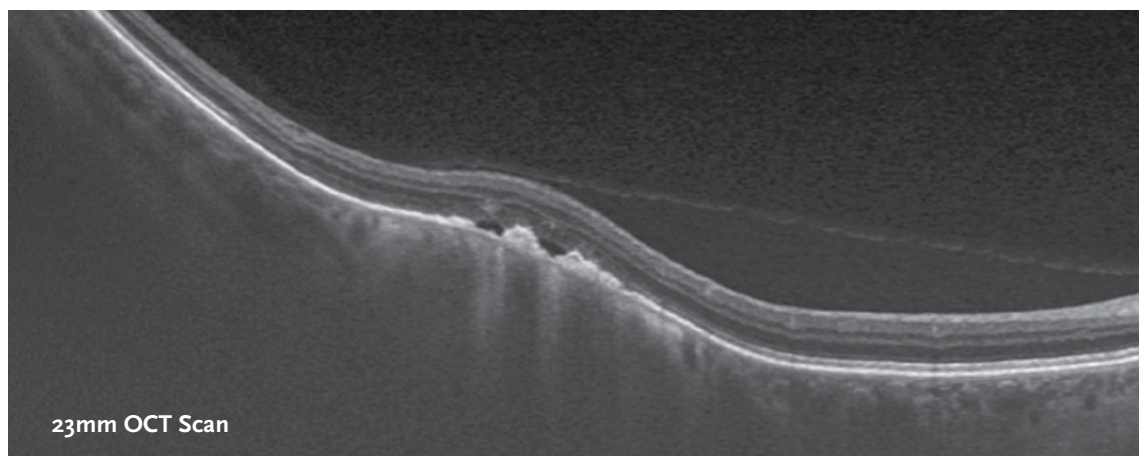


**optomap fa**

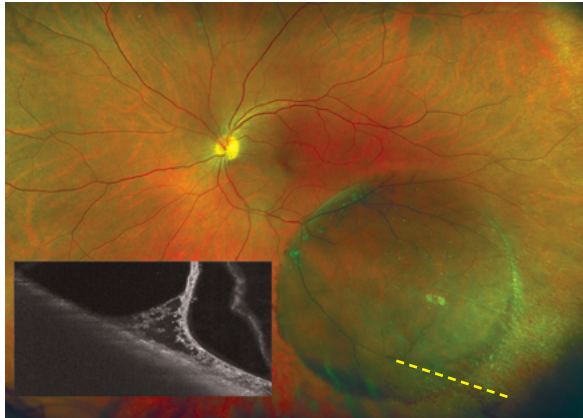
Courtesy of Prof Paulo Stanga

**optomap icg**

Courtesy of Srinivas Sadda, MD



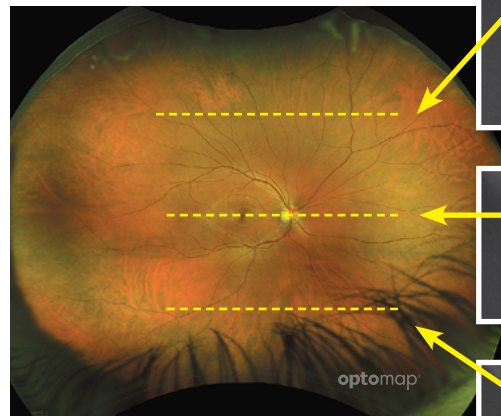
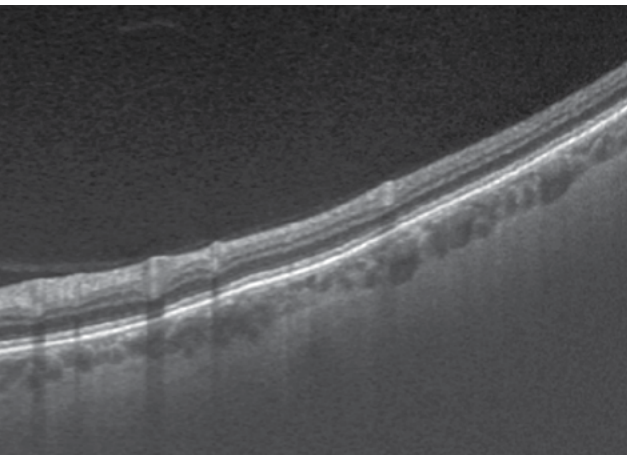
# MULTIMODAL IMAGING



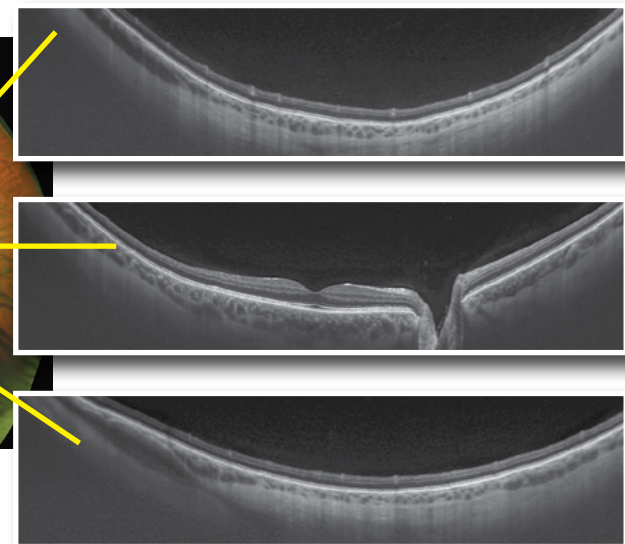
UWF guided OCT enables OCT capture even in the far periphery.

## FEATURES AND BENEFITS

- UWF with integrated swept source OCT, facilitates detailed examination of the retina-vitreous to sclera
- High resolution **optomap** image enhances pathology detection and management from macula through the far periphery<sup>1</sup>
- Ultra-fast, single-capture, 200° imaging (less than ½ second), can improve clinic flow and patient satisfaction<sup>2</sup>
- UWF guided, swept source OCT, images pathology anywhere on the **optomap**
- Non-mydratric, cSLO imaging, effective through most cataracts and small (2mm) pupils
- 1050 nm OCT light source, provides deeper tissue penetration for clear, detailed choroidal imaging
- 3-in-1 Color Depth Imaging™ provides important clinical data from the retinal surface through the choroid
- Multiple imaging modes in a single device decreases imaging time
- Optos**Advance**™ Image Management software streamlines image review and consultations
- DICOM compatible software supports compliance with the Code of Federal Regulations<sup>3,4</sup>



Color **optomap** image with superior, central, and inferior line scans



<sup>1</sup> Silva et al, Nonmydratric Ultrawide Field Retinal Imaging Compared with Dilated Standard 7-Field 35-mm Photography and Retinal Specialist Examination for Evaluation of Diabetic Retinopathy, AJO 2012. <sup>2</sup> Tornambe, The Impact of Ultra-widefield Retinal Imaging on Practice Efficiency, US Ophthalmic Review 2017 <sup>3</sup> All Covered Entities must securely backup 'retrievable exact copies of ePHI' (CFR 164.308 (7) (ii) (A)). <sup>4</sup> All Data must be backed up off site. HIPAA final security rule (CFR 164.308(a)(1)).

## TECHNICAL SPECIFICATIONS

TRADE NAME	UWF-OCT or Silverstone
MODEL NAME	P200TxE
MODEL NUMBER	A10750
<b>optomap UWF Imaging</b>	
IMAGING MODALITIES	Color
	Sensory (red-free)
	Choroidal
	Autofluorescence (AF)
	Fluorescein (FA)
	Indocyanine Green (ICG)
RESOLUTION	optomap: 20 µm, optomap plus: 14 µm
LASER WAVELENGTHS	Blue Laser: 488 nm (for FA) Red laser: 635 nm Green laser: 532 nm (for AF) Infra-red: 802 nm (for ICG)
EXPOSURE TIME	Less than 0.4 seconds
OCT Imaging	
SIGNAL TYPE	Optical scattering from tissue
SIGNAL SOURCE	Swept Source OCT, Wavelength 1050 nm
OPTICAL POWER	Laser safety Class-1 following IEC/EN60825-1:2014(2007)
AXIAL RESOLUTION*	< 7 micron
TRANSVERSE RESOLUTION*	< 20 micron
SCANNERS	Galvanometric X, Y pair
SCAN DEPTH	Up to 2.5 mm
A-SCAN RATE	Up to 100k cycles/sec
SCAN TYPES	Line Scans Width: 6 mm, 14 mm, 23 mm
	Volume & High-Density Volume Scans Height: Min 3.5 mm; Max 9 mm Width: Min 6.0 mm; Max 14 mm

\*In tissue



System	
FOOT PRINT	Width: 540 mm / 22 in Depth: 570 mm / 23 in including chin rest Height: 683 - 707 mm / 27 - 28 in
WEIGHT	Max 45 kg
TABLE SPACE REQUIREMENTS	Width: 887 mm / 35 in Depth: 600 mm / 24 in Height: 725 to 1205 mm / 29 - 48 in
COLORS	White with aqua trim
SYSTEM VOLTAGE	100-240V, 50/60Hz
POWER CONSUMPTION	289-350 VA

NOTE: Specifications are subject to change without notice.

More than 800 peer-reviewed studies and thousands of case studies and testimonials show the long-term value of **optomap** imaging in diagnosis, treatment planning, and patient engagement. The integration of UWF guided swept source OCT with an **optomap** provides a complete solution for patient imaging.



**Optos plc**  
Queensferry House  
Carnegie Campus  
Enterprise Way  
Dunfermline, Fife  
Scotland KY11 8GR  
Tel: +44 (0)1383 843350  
ics@optos.com

**Optos, Inc.**  
500 Nickerson Road  
Suite 201  
Marlborough, MA 01752  
USA  
Call Toll-free (US & Canada): 800 854 3039  
Outside of the US: 508 787 1400  
usinfo@optos.com

**Optos Australia**  
10 Myer Court  
Beverly  
South Australia 5009  
Tel: +61 8 8444 6500  
auinfo@optos.com

